

Procedure to remove Barra ICC

Tools required

1. Small flat screw driver.
2. Phillips screw driver.
3. 8 mm socket.

1. With the flat screw driver, pop the plastic panel on top of the ICC slightly then with your hand pop the panel backward then pull out (see Fig 1).

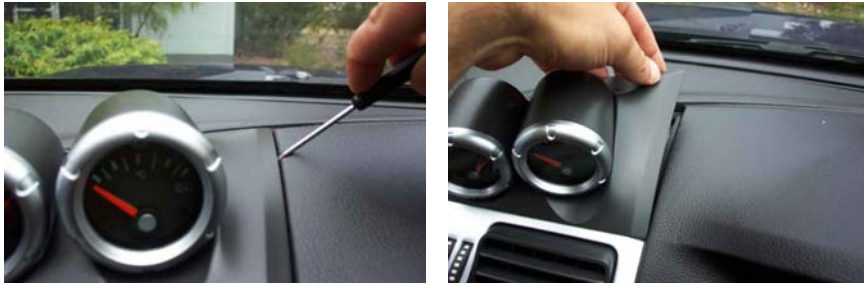


Fig 1

2. With your hand pull up from the front the panel around the gear lever to remove (Fig 2).



Fig 2

3. With a Phillips screw driver, remove 2xs screws from under the Gear lever panel(Fig 3).



Fig 3

4. Also remove 1x screw from under the top panel (Fig 4).



Fig 4.

6. Remove the side panels for center consol as shown.(Fig 5).



Fig 5.

6. With a socket key (8 mm) remove the 4x screws from side of ICC(Fig.6). 2x screws on each side.

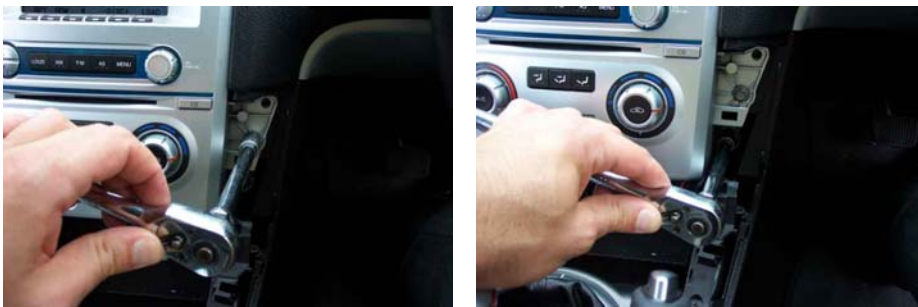


Fig 6.

7. Remove the tissues box from under the ICC as shown.(Fig 7).



Fig 7a



Fig 7b



Fig 7c

Fig 7c shows the power source connector pulled out from the tissue box.

8. After you removed the tissue box, there are 4 connectors & antenna plug which you have to unplug before pulling ICC out. (Fig 8).

Fig 8

Press clip then pull down for all connectors.

9. Now the ICC is ready to remove. Hold top of ICC and bottom and pull out from dash.

10. After removing ICC, there's a plastic box attached to bottom of ICC. Remove it by removing 4x screws and reconnect the connectors in the car to this box so you can drive. Your remote locking will no longer function.

Remove for RADIO and LOW LEVEL OUTPUT modification purposes.

Radio CD Module

